

Caas Workstation

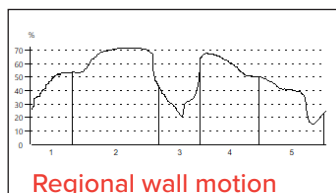
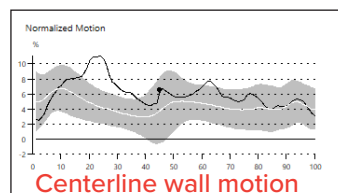
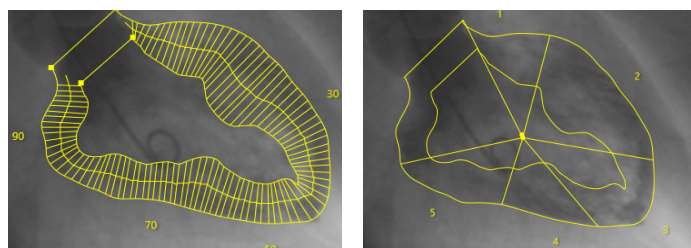
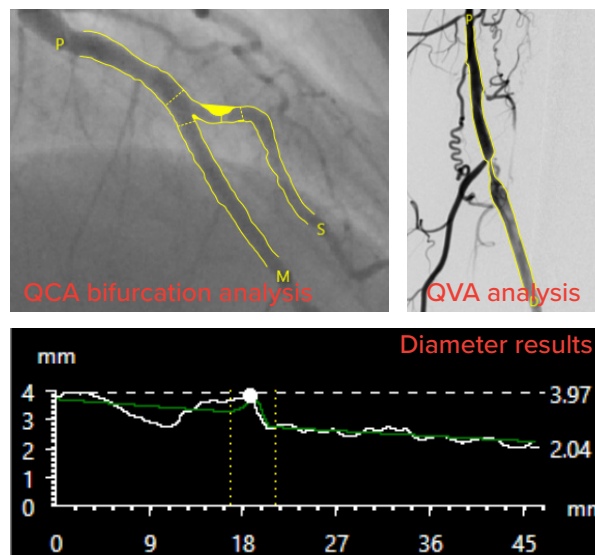
The complete package for PCI procedure assessment

Quantitative Coronary Analysis

Assessment of coronary artery dimensions and quantification of stenosis for single and bifurcated vessels. QCA assist in the selection of the optimal balloon or stent size during Percutaneous Coronary Intervention (PCI).

- Can be extended to QCA3D
- Also available for peripheral vessels:

Quantitative Vascular Analysis

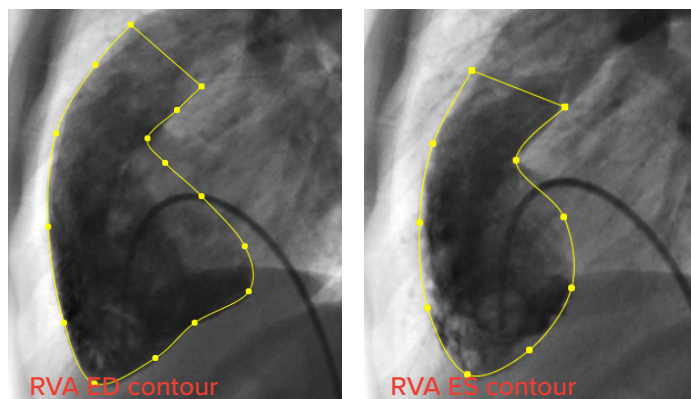


Left & Right Ventricular analysis

Measurement of ventricular volumes, ejection fraction, stroke volume, cardiac output and wall motion.

LVA Multiple wall motion analysis

RVA Seven models for the calculation of the ventricular volume



QCA has become an invaluable tool for the interventional cardiologist, providing objective and reproducible measurements of coronary artery dimensions.

Described in the book: Quantitative Coronary Angiography in Clinical Practice



Scan QR code for more information or free trial license.

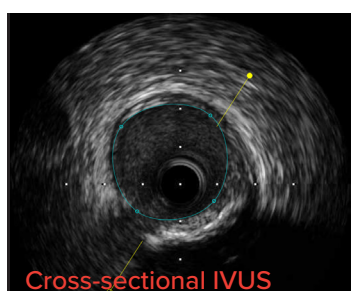
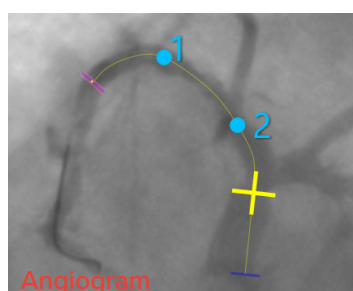
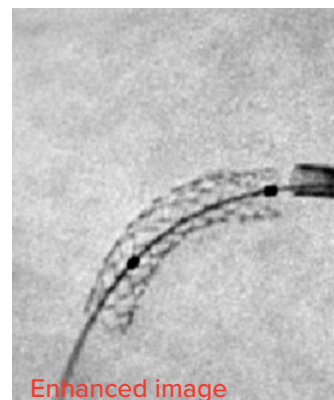
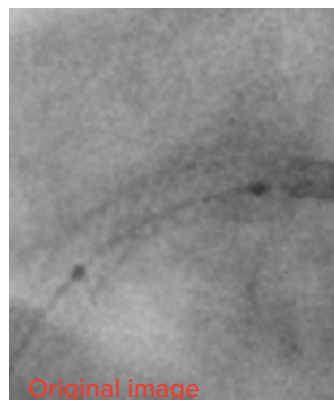
PIE
MEDICAL
IMAGING

Caas Workstation

StentEnhancer

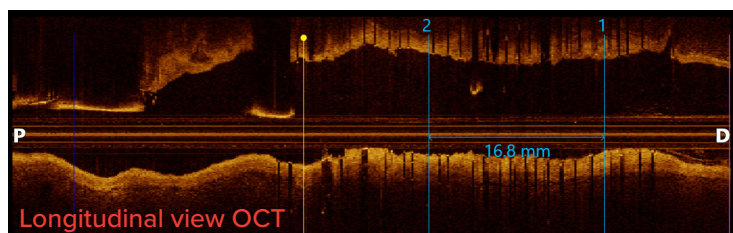
Enhanced stent visualization for:

- Quick assessment of the expansion of the stent.
- Verification of correct stent placement.
- Assessment of stent-in-stent placement.



IV-LINQ

Real time co-registration between angiography and IVUS/OCT to obtain a detailed view of the lesion and its exact location in the coronary tree.



- Vendor independent.
- Bookmarks indicated on IVUS/OCT pullbacks are visualized on the angiogram.
- Diameter and area measurements on IVUS/OCT.

Co-registration appears accurate, robust and induced a minimal delay on the normal cathlab activities.

*Published in Cardiovascular
Revascularization Medicine*

Pie Medical Imaging stands for:

- Having the best understanding of clinical workflows
- Being a knowledge partner where our customers can build on
- Fast and intuitive software solutions

Quality Assurance:

Pie Medical Imaging develops, produces and sells products in accordance with international accepted standards. CAAS Workstation is FDA 510(k) cleared and MDD compliant (CE marked).

Philipsweg 1
6227 AJ Maastricht
The Netherlands

t +31 (0)43 328 13 28
e pmi@pie.nl
i www.piemedicalimaging.com

**PIE
MEDICAL
IMAGING**