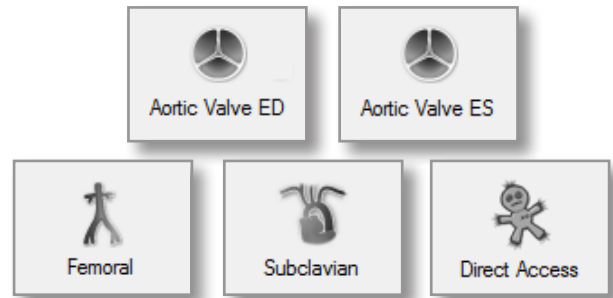


# 3mensio SH Aortic Valve

*The pre-op assessment tool for TAVI procedures*

Quick, easy and reliable planning of percutaneous Aortic Valve replacement with dedicated modules for Aortic Root and Approach Route Assessment.

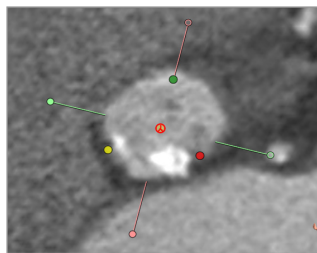
Possibility to assess both the ED and ES phase.



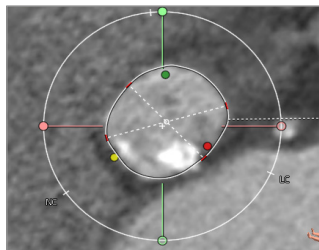
Aortic Root Assessment and Approach Route modules



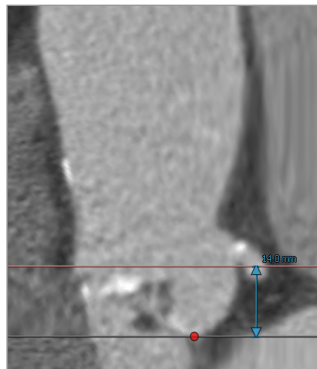
Center Lumen Line



Aortic Annulus



Aortic Annulus Measurement



Coronary Height Measurement

## Aortic Root Measurements

### Automatic Segmentation

Prepare for Aortic Root measurements within a few seconds due to automatic segmentation of the ascending aorta. The software allows for an easy and precise definition of the annulus plane.

### Measurements

- Diameter, area and perimeter can be measured perpendicular to the center lumen line
- Length measurements are performed on the stretched vessel view to measure e.g. coronary ostia heights

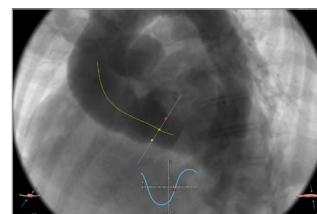
## Aortic Root Assessment

### Optimal Projection

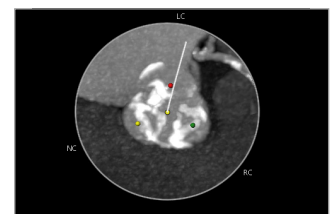
Use the Simulated Angio View to find an optimal projection which can help save time, contrast and radiation during the procedure.

### Calcification Assessment

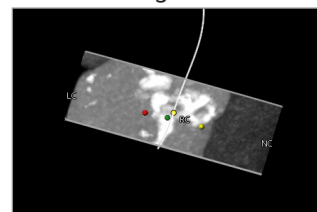
There are different views available to assess the shape and position of calcium.



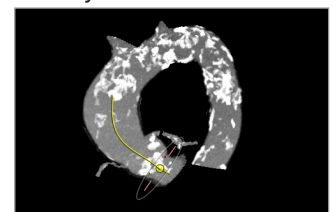
Simulated Angio View



Hockey Puck



Hockey Puck



Calcification View



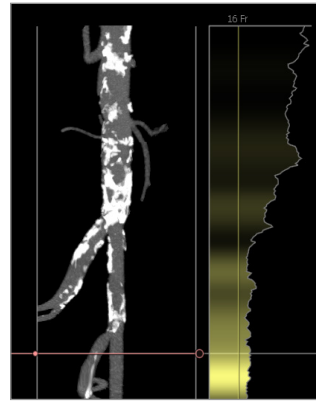
Scan QR code for more information or free trial license.

PIE  
MEDICAL  
IMAGING

# 3mensio SH Aortic Valve

## Femoral and Subclavian Approach

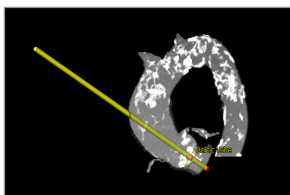
The Femoral and Subclavian modules enable you to quickly get an overview of the patient approach route. Use the Stretched Vessel View to visualize vessel diameters, calcifications and tortuosity. Enter the catheter's French size to see it projected over the complete trajectory.



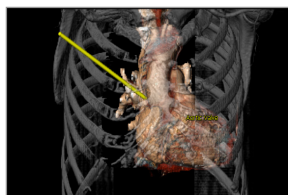
Stretched Vessel View



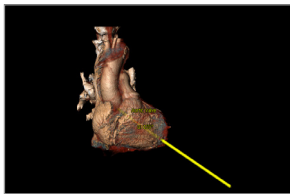
Volume Rendering View



Calcification View



Heart and Bone View



Heart View



Assessment View

## Direct Access Approach

Assess the **Direct Aortic** or **Transapical** approach using an automatically and perpendicular placed catheter. The path of the catheter can be followed from the valve plane to the skin. Different structures like ribs, skin, vessels and calcifications can be visualized.

## Reporting

A complete report can be created by labeling the measurements in the different workflows. The most important measurements are shown in a summarizing infographic. Customize your report by adding screenshots of the assessment.

### Review Interactive reports on your iPad

Open the report in the 3mensio Report app for interactive visualization of the anatomy, measurements and screenshots.



### Quality Assurance:

Pie Medical Imaging develops, produces and sells products in accordance with internationally accepted standards. 3mensio Workstation is FDA 510(k) cleared and CE marked (MDD compliant).